

Schlumberger

4-ARM CALIPER

COMPANY E G & G  
 WELL INEL # 1  
 FIELD WILDCAT  
 COUNTY BUTTE STATE IDAHO

LOCATION \_\_\_\_\_  
 API SERIAL NO. \_\_\_\_\_ SEC. I TWP 3N RANGE 29E

Other Services:  
 TEMPERATURE  
 FDC/CNL/GR  
 BHC  
 DIL

Permanent Datum: GL; Elev.: 4874.86  
 Log Measured From GL Ft. Above Perm. Datum Elev.: K.B. 4895  
 Drilling Measured From GL G.L. 4874.86

Date	3/3/79	3/27/79		
Run No.	ONE	TWO		
Depth-Driller	1524	3555 (STRAP)		
Depth-Logger (Schl.)	1491	3553		
Btm. Log Interval	1490	3552		
Top Log Interval	0	1462		
Casing-Driller	30" @ 40'	20 @ 1511	@	@
Casing-Logger	42	1512		
Bit Size	26"	17.50		
Type Fluid in Hole	FGM	LSND		
Dens.	8.5	50	8.8	57
Visc.				
pH				
Fluid Loss		ml	8.0	13.6ml
Source of Sample	MUDTANK	MUD TANK		
Rm @ Meas. Temp.	6.07 @ 45 °F	8.75 @ 70 °F	@ °F	@ °F
Rmf @ Meas. Temp.	5.77 @ 75 °F	8.94 @ 59 °F	@ °F	@ °F
Rmc @ Meas. Temp.	9.11 @ 45 °F	12.86 @ 70 °F	@ °F	@ °F
Source: Rmf	M	C		
Rmc				
Rm @ BHT	4.34 @ 63 °F	5.22 @ 116 °F	@ °F	@ °F
Circulation Stopped	3/3 @ 1500	3/27 @ 0130		
Logger on Bottom	3/3 @	3/27 @ 2000		
Max. Rec. Temp.	63 °F	119 °F	°F	°F
Equip. Location	8073 EVSTN	8060 EVSTN		
Recorded By	RAIVO	ROONEY		
Witnessed By Mr.	T. E. NEWMAN	STRAWN/NELSON		

FOLD HERE The well name, location and borehole reference data were furnished by the customer.

Run No.	ONE	TWO
Service Order No.	73963	40303
API Serial No.		
Fluid Level	FULL	FULL

EQUIPMENT DATA	
BGT	CSU 8060

REMARKS:  
 CALIPER STUCK PARTIALLY  
 CLOSED @ 1400'  
 RUN 2- MAXIMUM CALIPER OPENING  
 = 50"

1-79 074034

SCALE CHANGES	Type Log	Depth	Scale Up Hole	Scale Down Hole

CALIBRATION DATA

Speed - F.P.M.	60
GR	
BKG. CPS	
Source CPS	
Tc	

All interpretations are opinions based on inferences from electrical or other measurements and we cannot, and do not guarantee the accuracy or correctness of any interpretations, and we shall not, except in the case of gross or willful negligence on our part, be liable or responsible for any loss, costs, damages or expenses incurred or sustained by anyone resulting from any interpretation made by any of our officers, agents or employees. These interpretations are also subject to Clause 4 of our General Terms and Conditions as set out in our current Price Schedule.

5'	25'	45'
----	-----	-----

45'

25''

5''

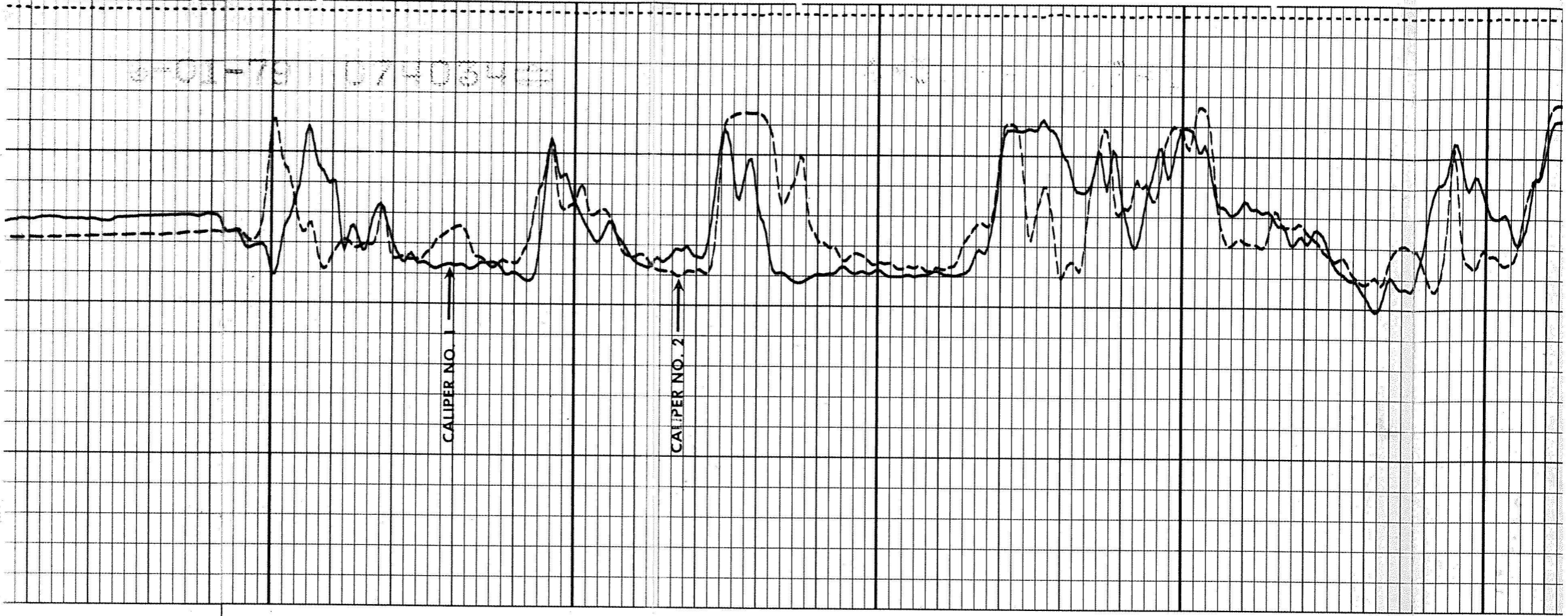
Casing

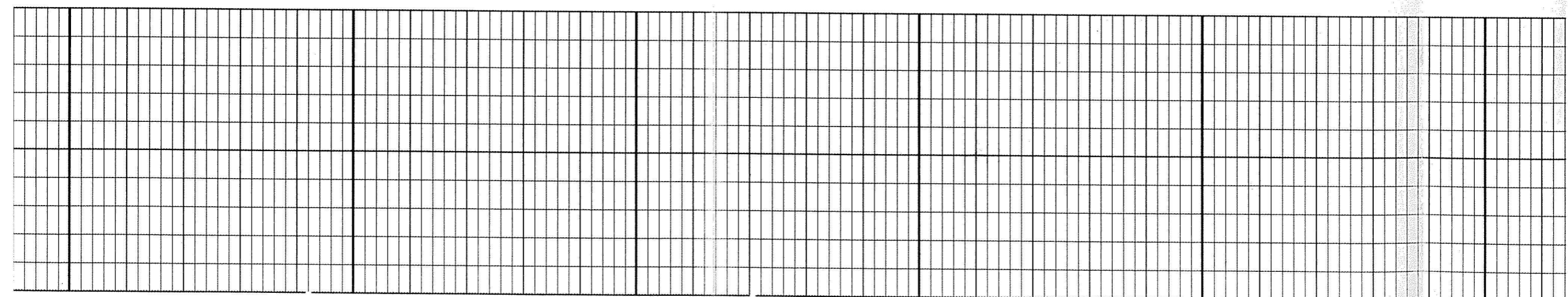
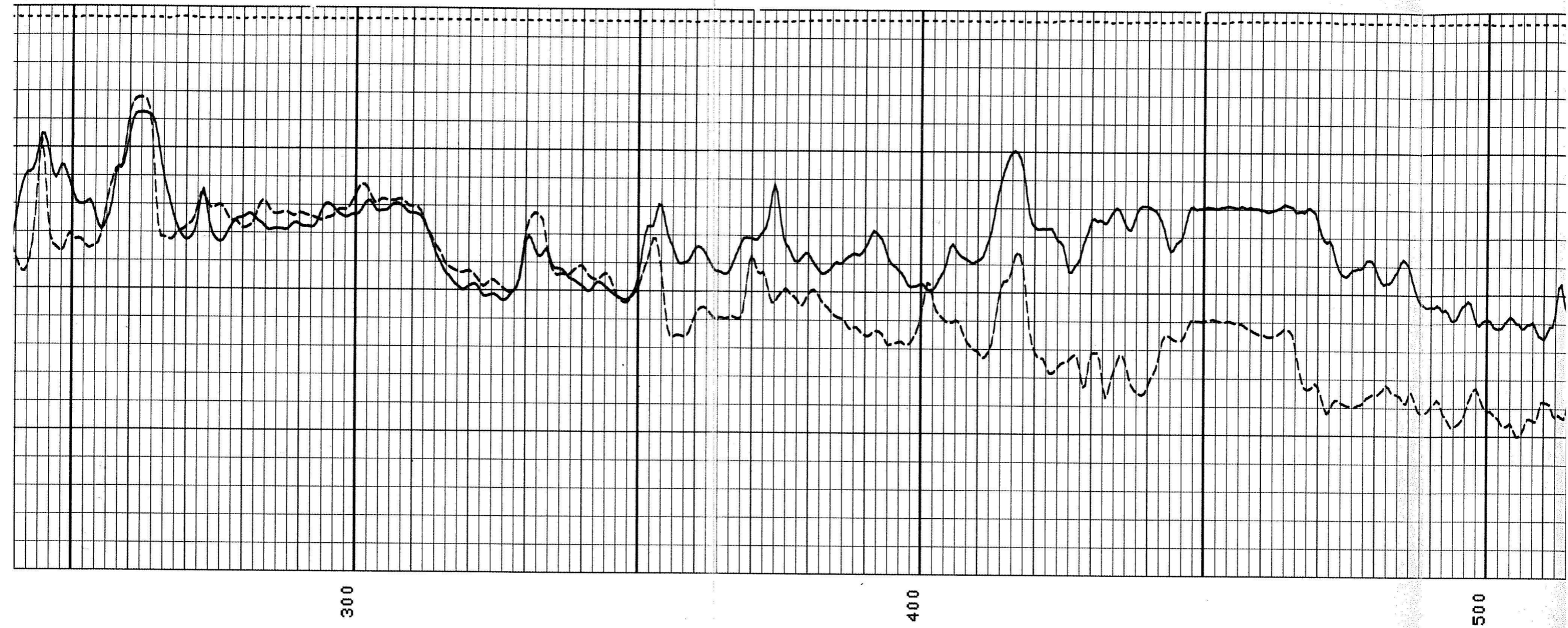
100

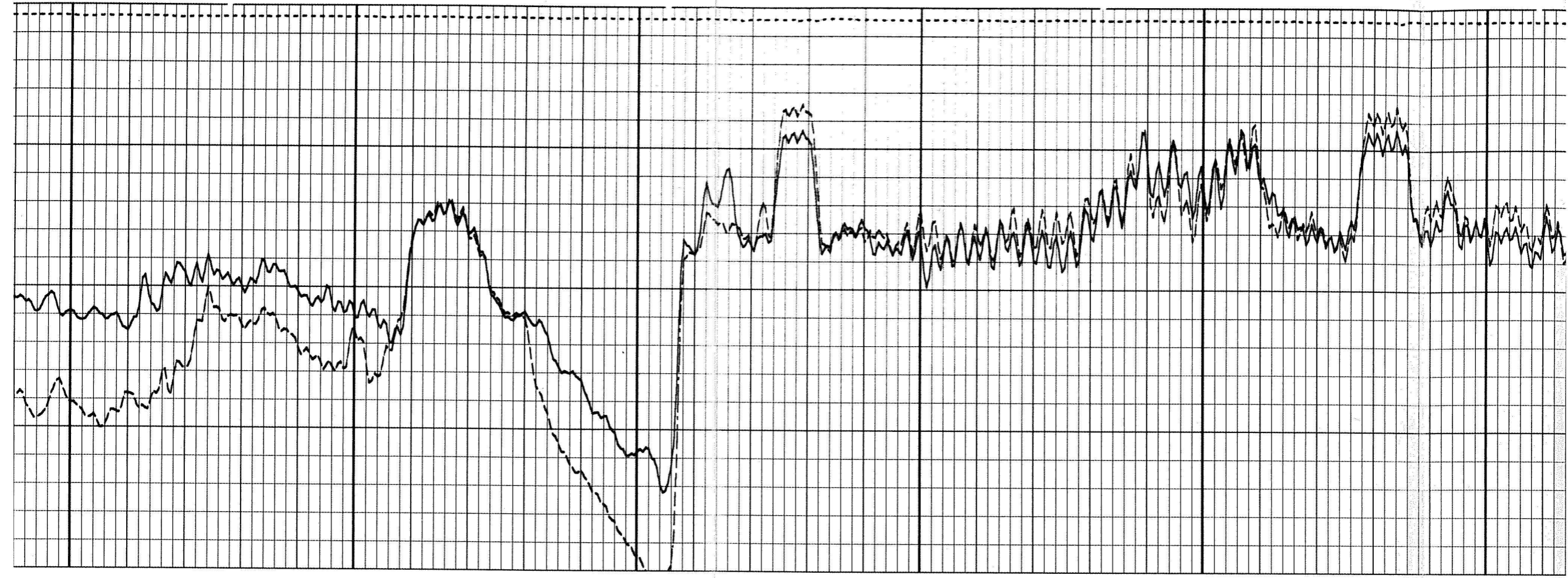
200

CALIPER NO. 1

CALIPER NO. 2



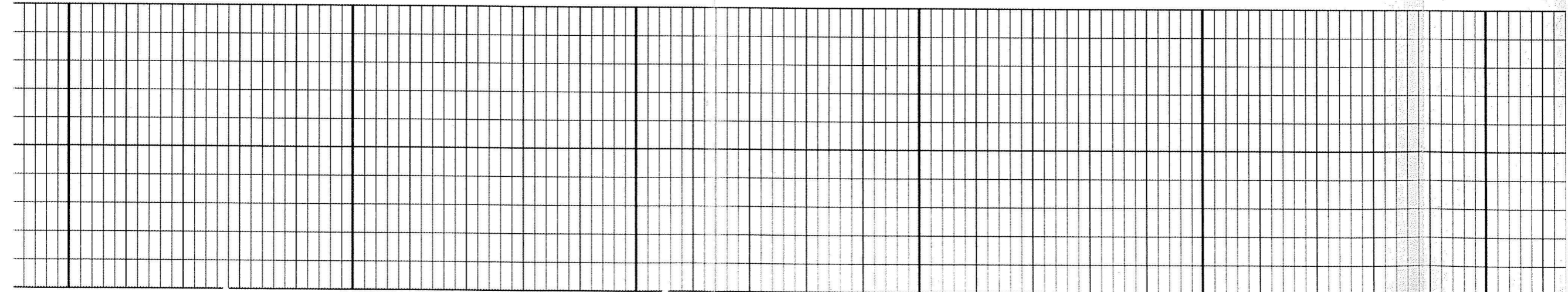


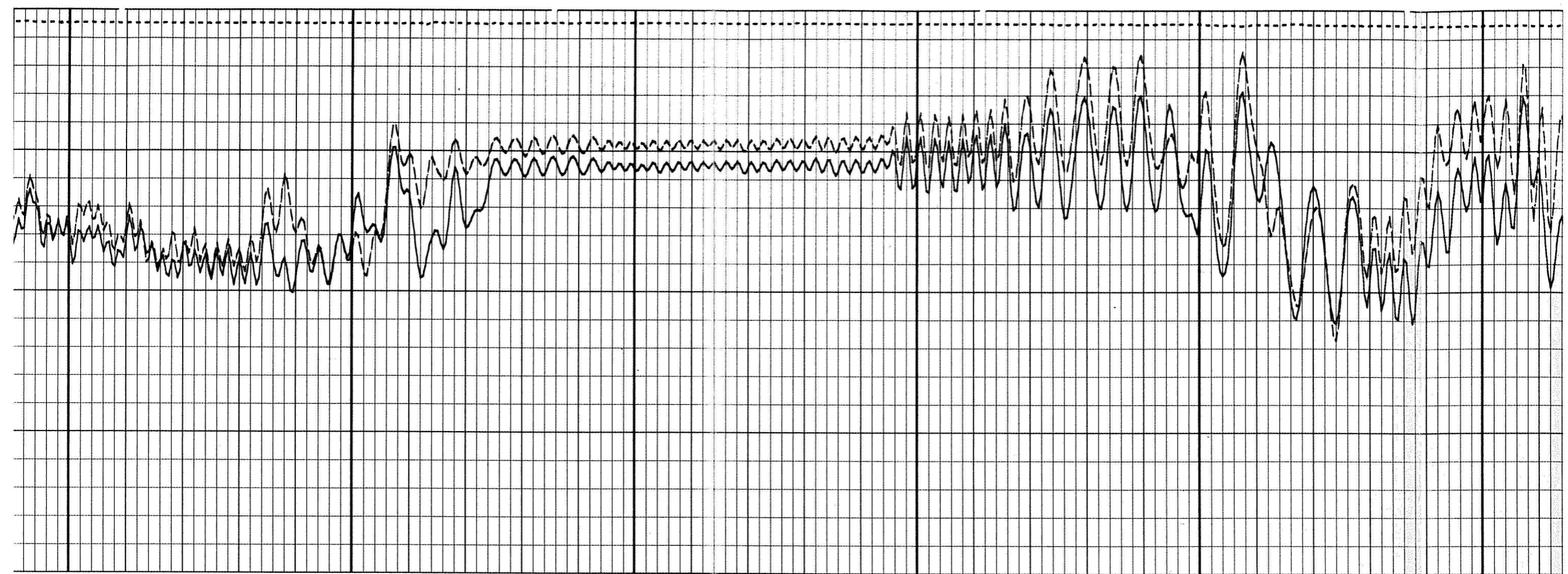


500

600

700

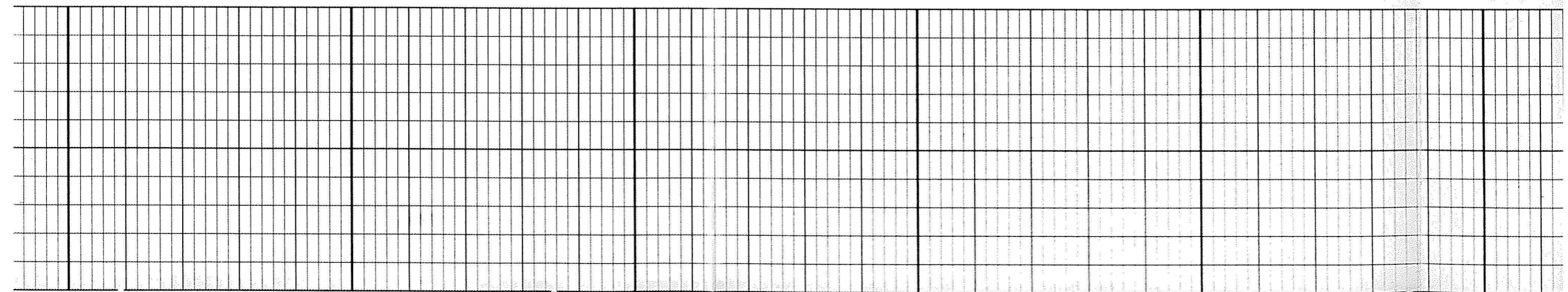


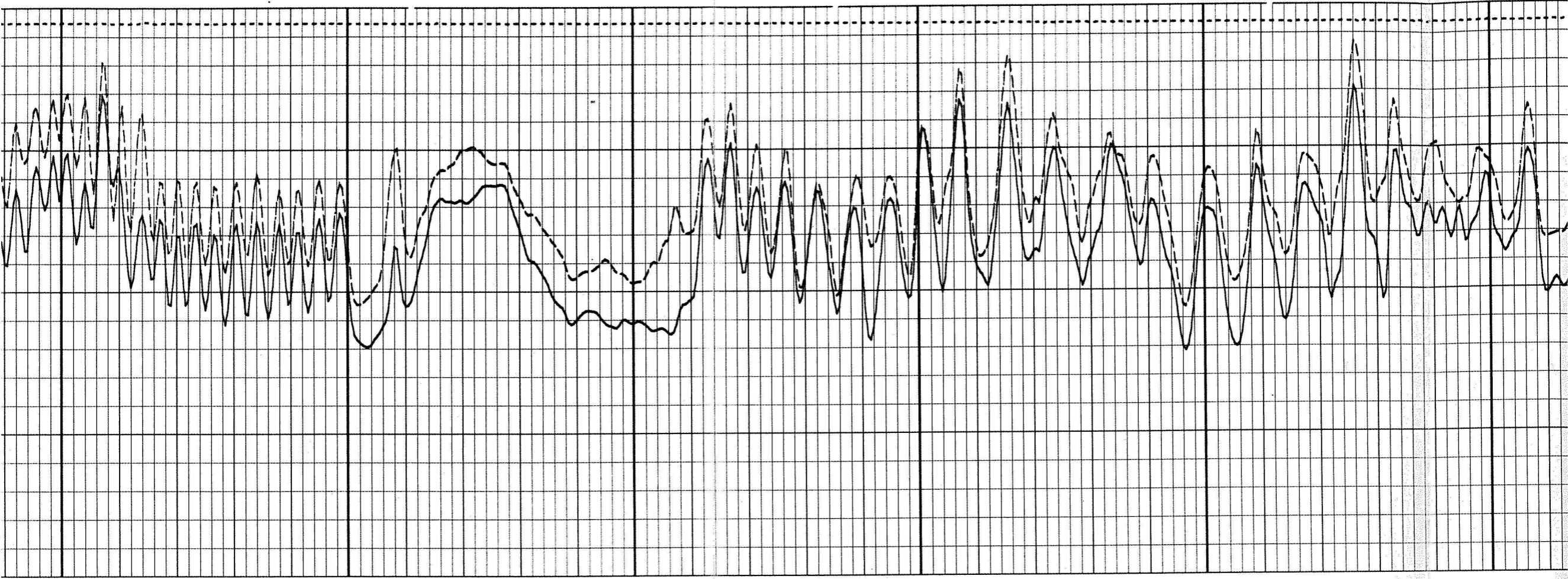


800

900

1000

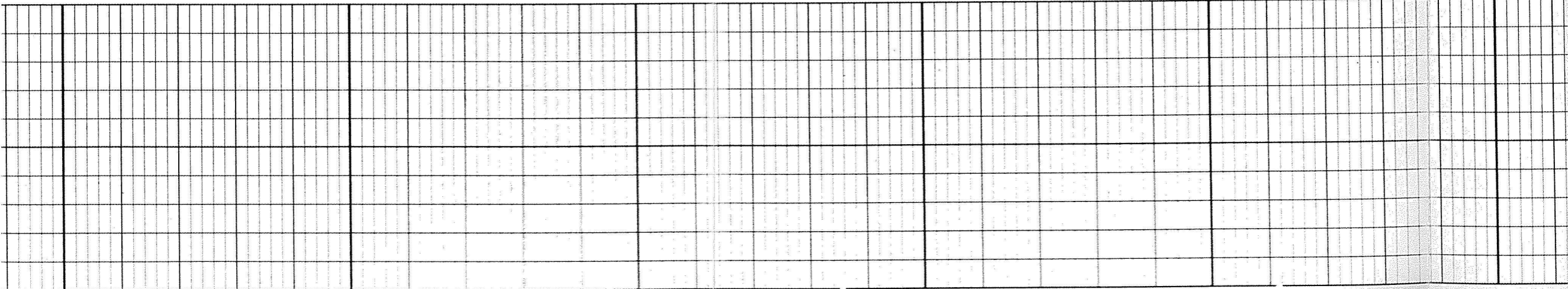




1000

1100

1200



6-01

Run 1



SEE REMARKS



CALIPER NO. 1

CALIPER NO. 2

1300

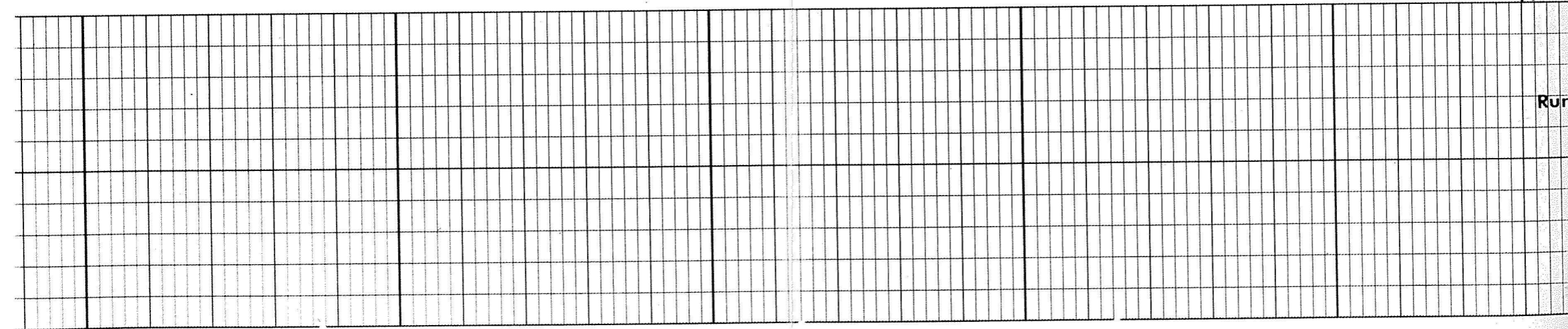
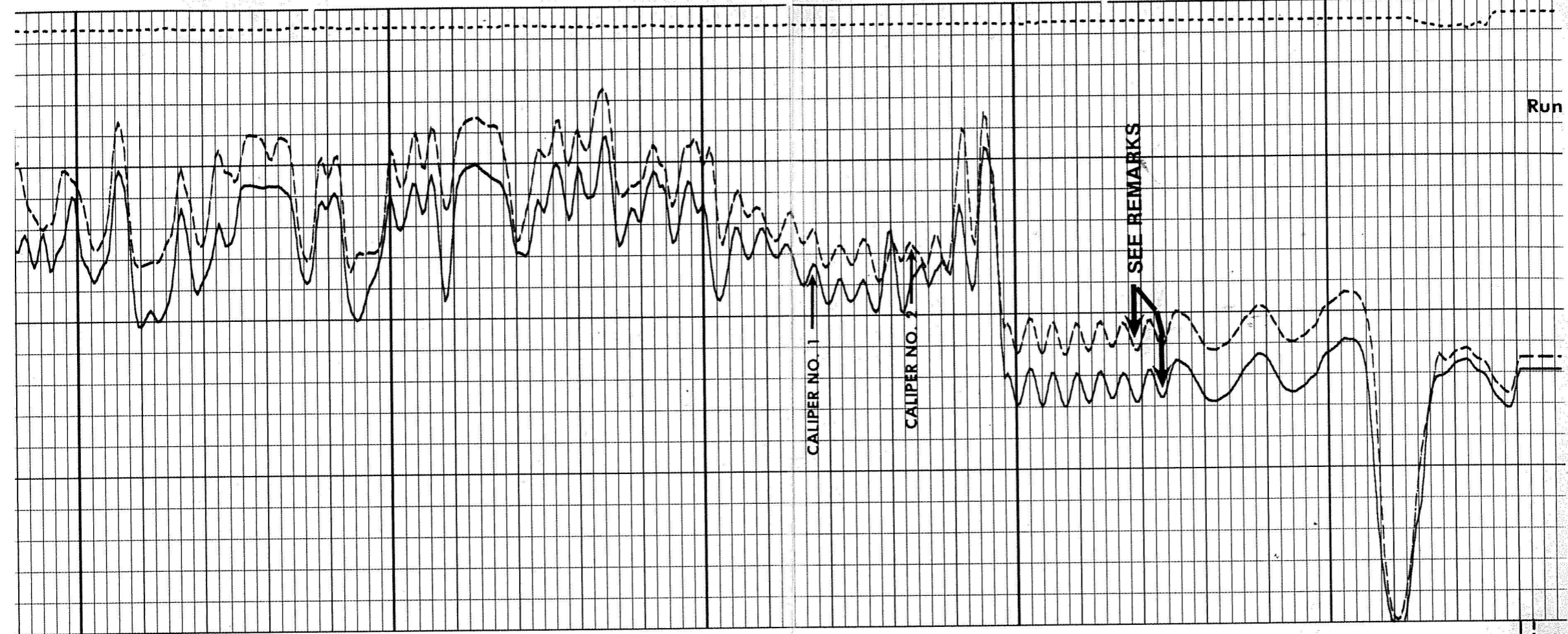
1400

FR

Run 1



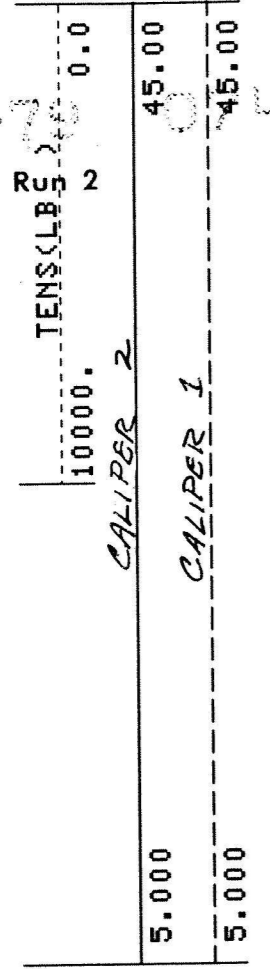
19  
19  
19  
19  
22  
22



1 ← → Run 2

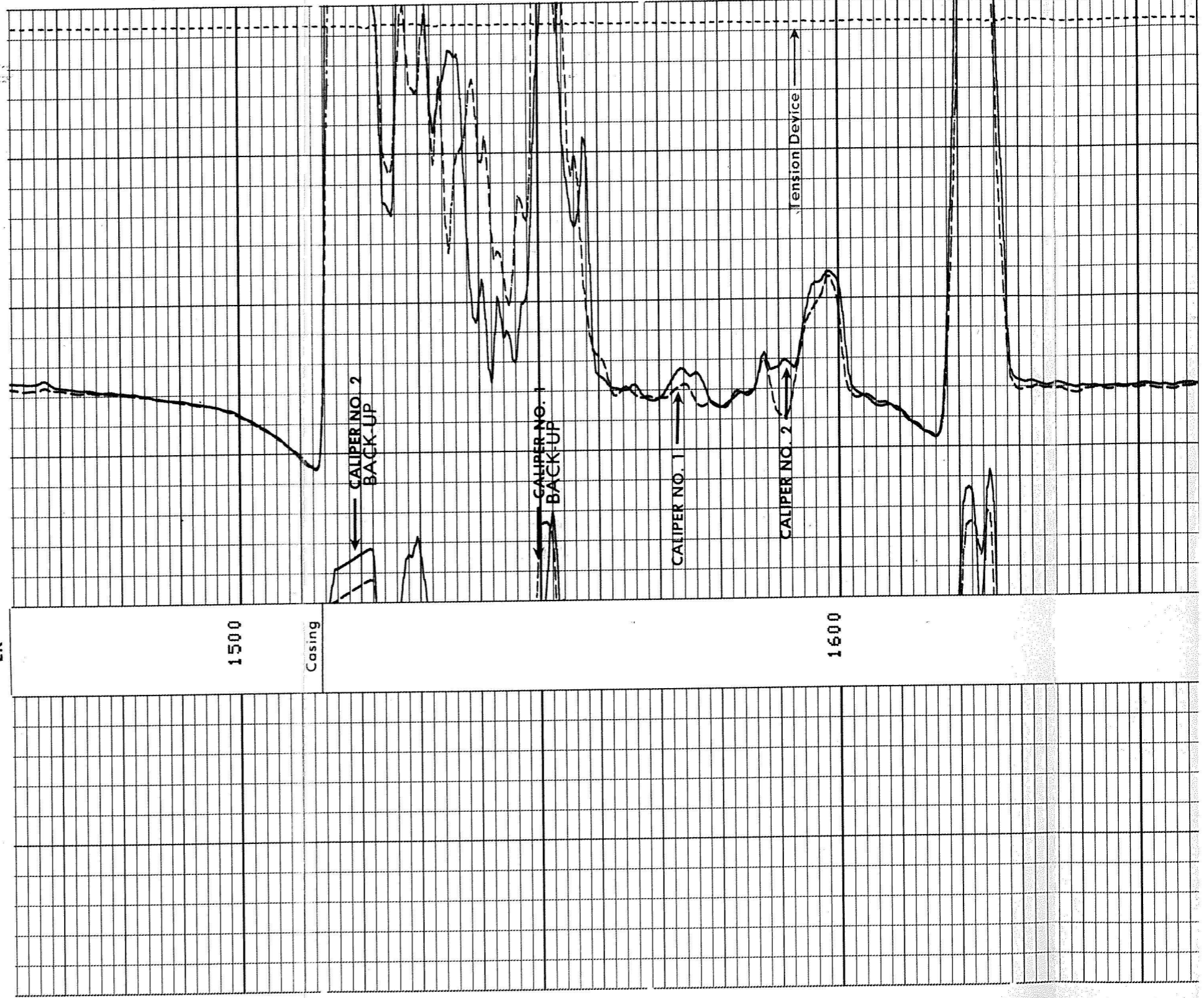
19 22  
19 22  
19 22  
19 22

1 ← →

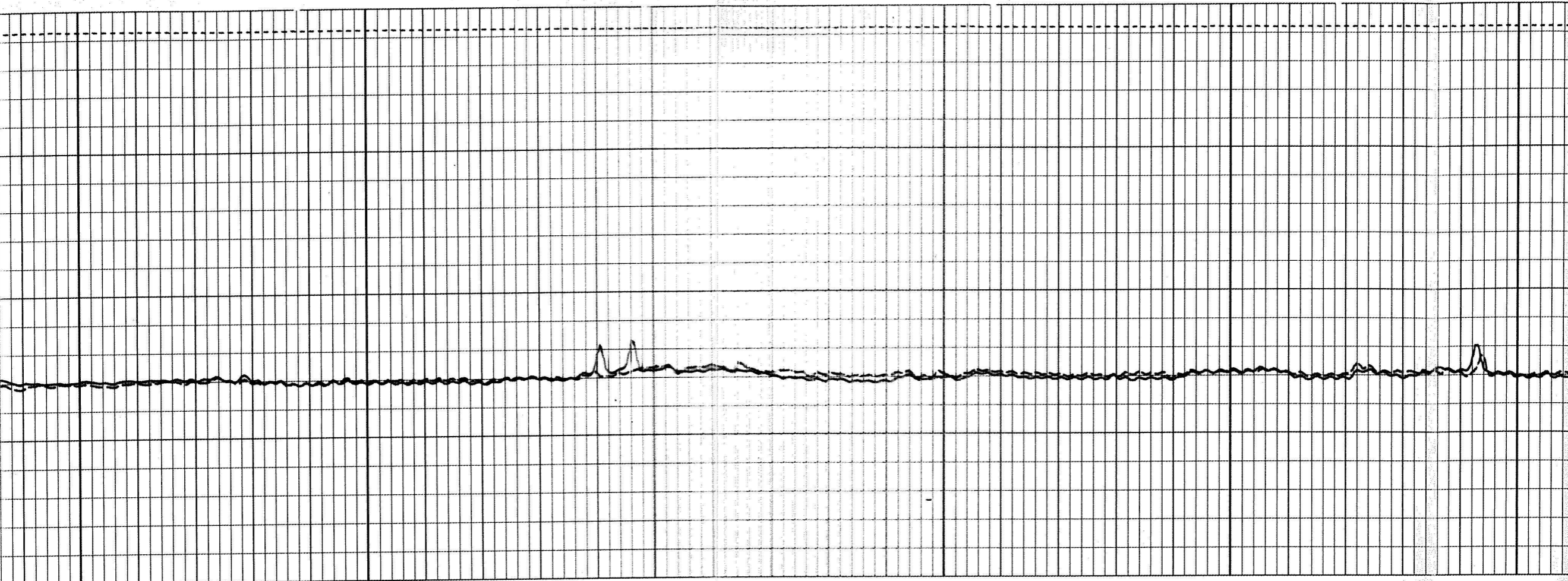


4034

22366  
LR



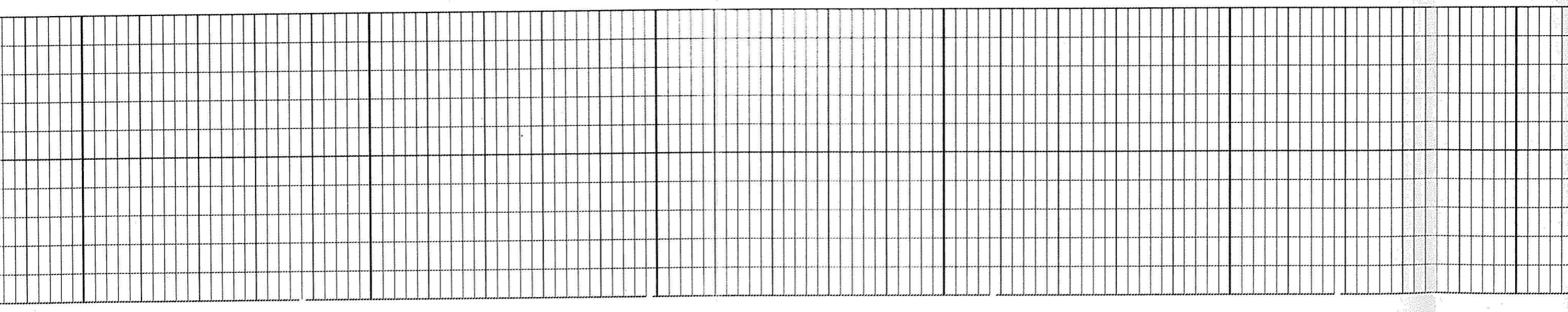


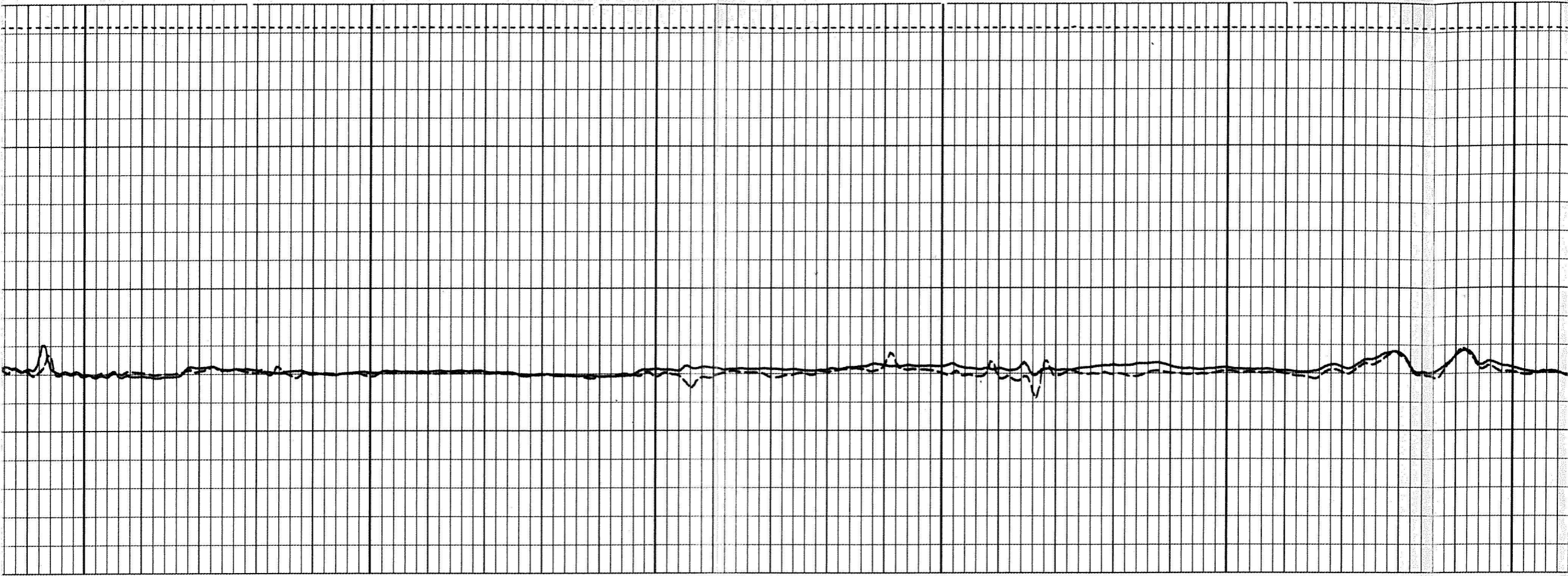


1700

1800

1900

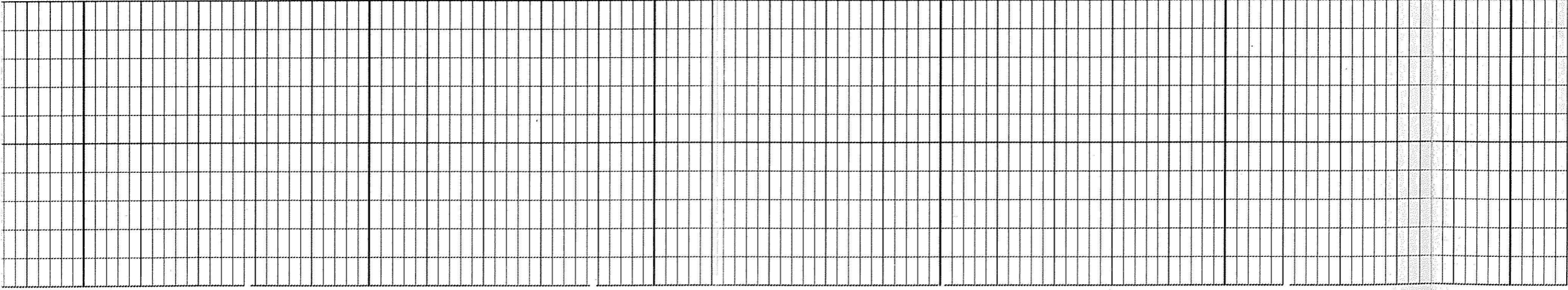


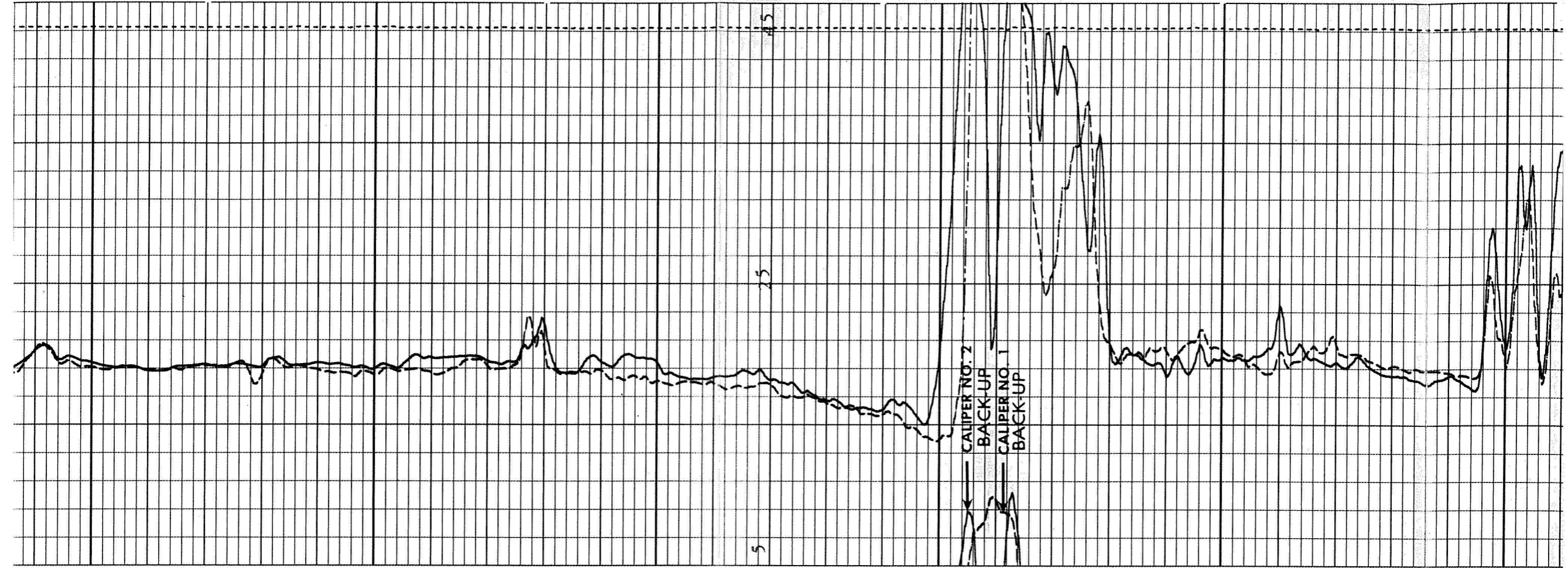


1900

2000

2100





2200

2300

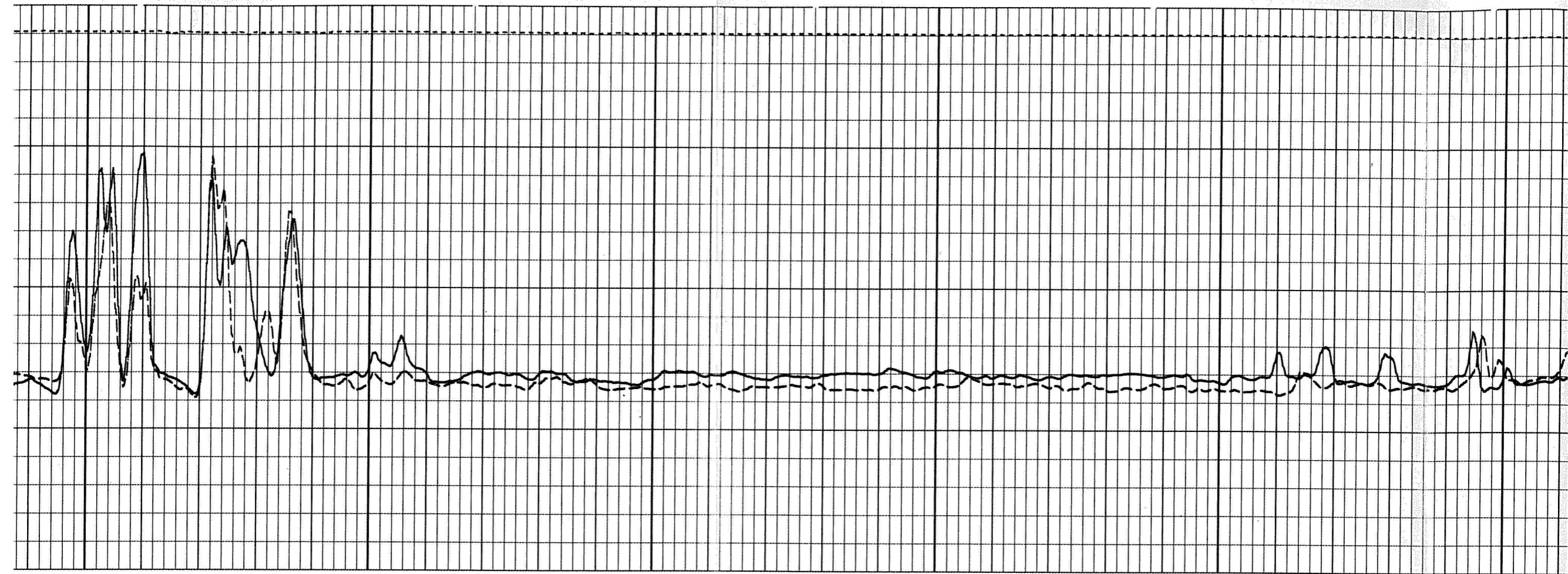
2400

5

15

45

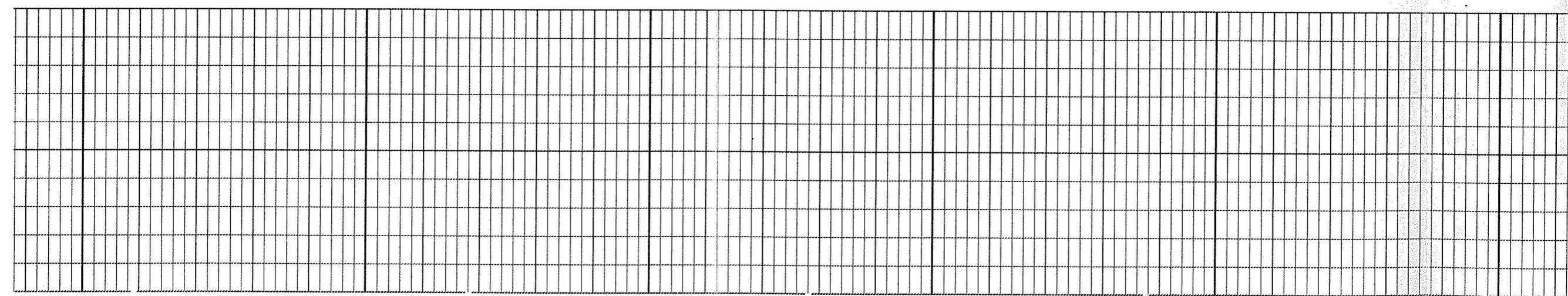
CALIPER NO. 2  
BACK-UP  
CALIPER NO. 1  
BACK-UP



2400

2500

2600

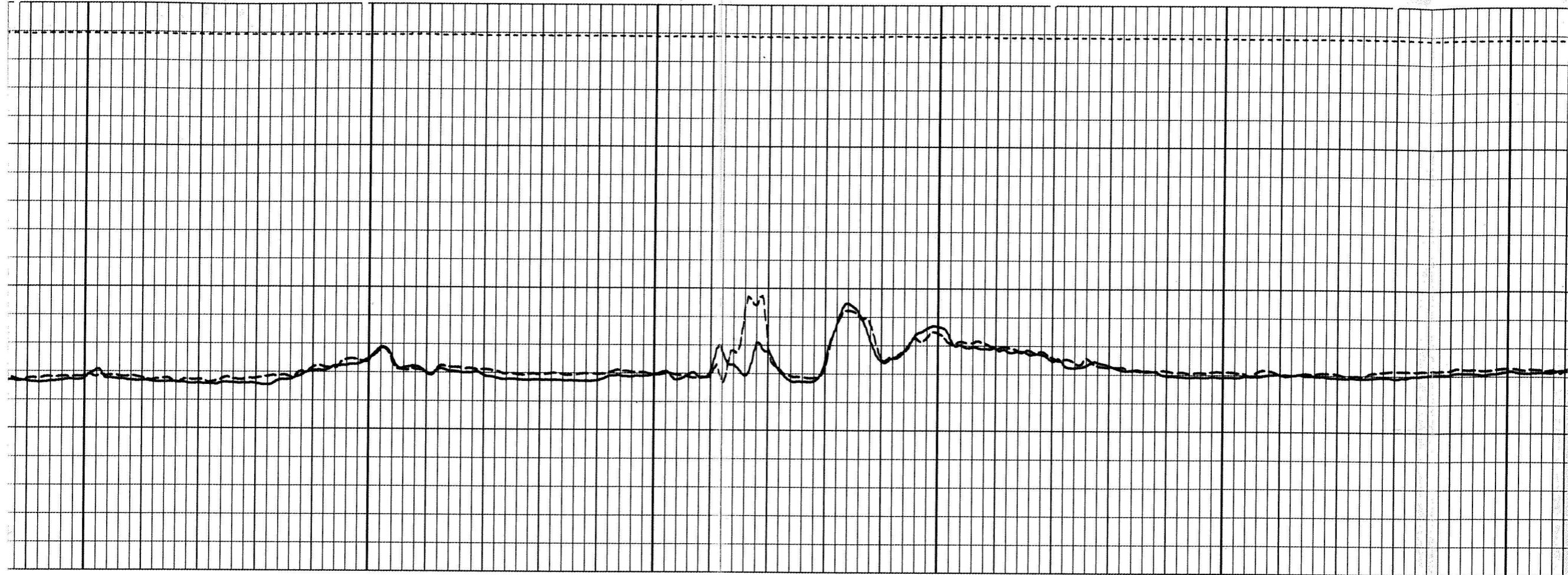




2700

2800

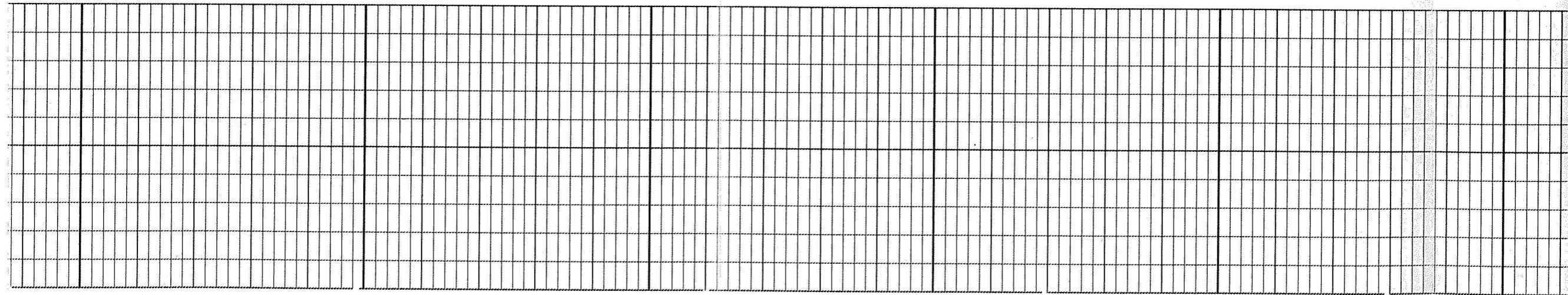
2900



2900

3000

3100

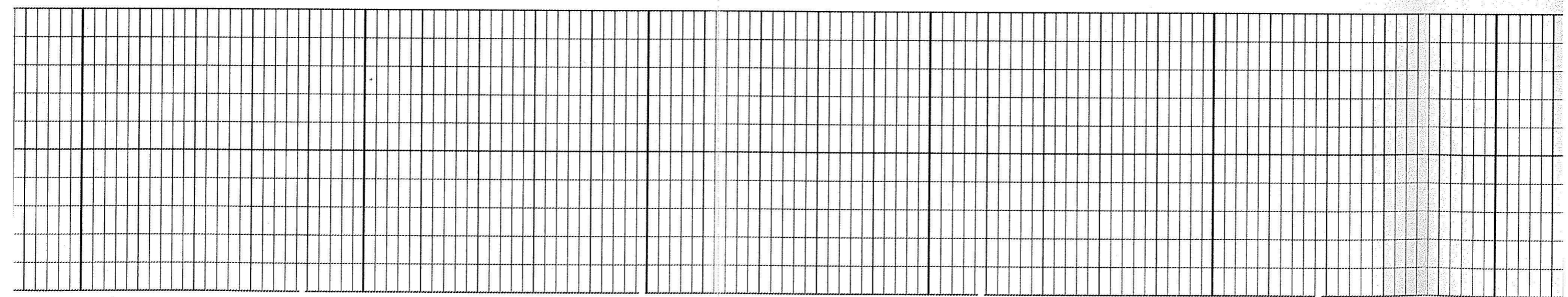




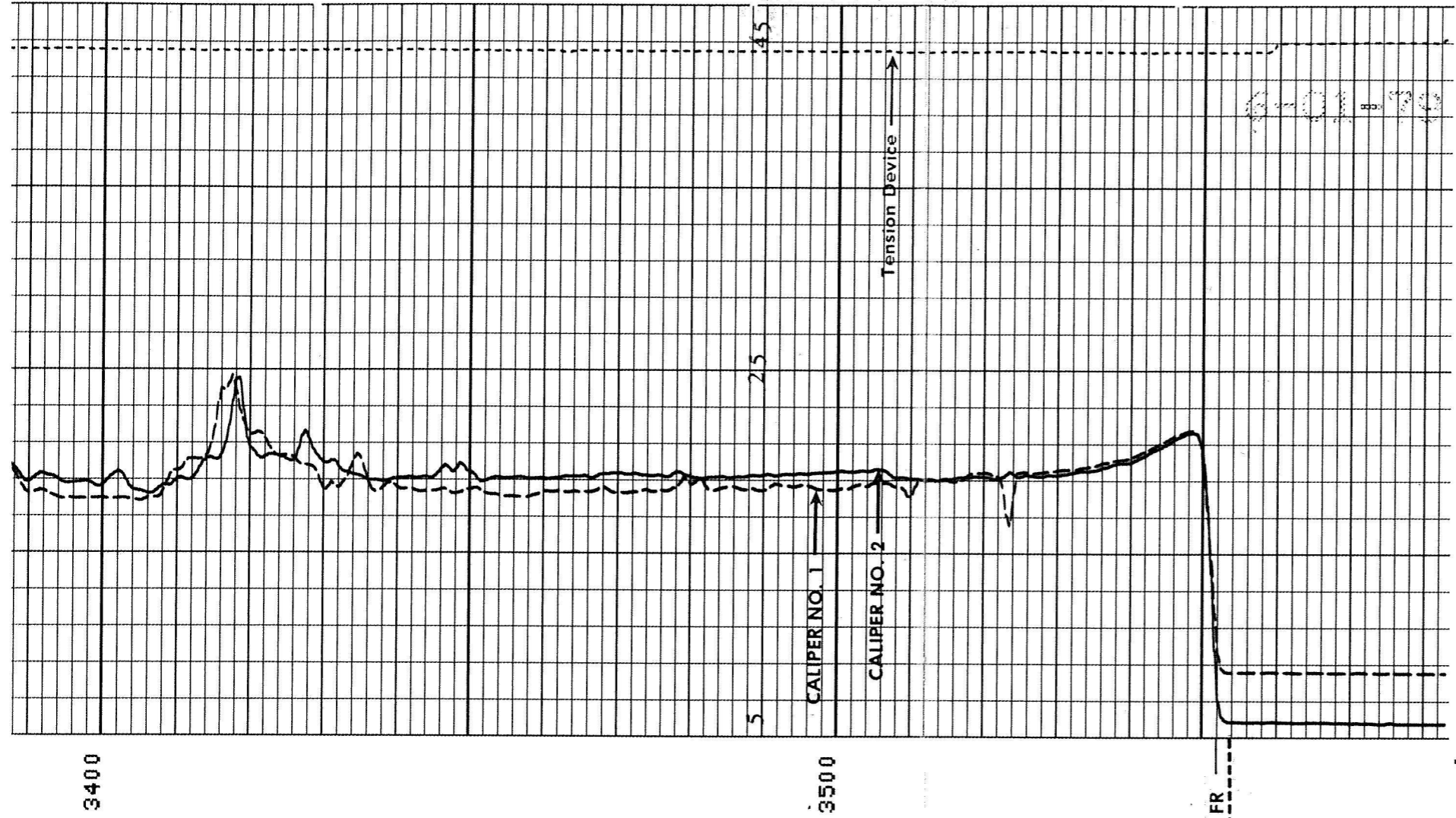
3200

3300

3400



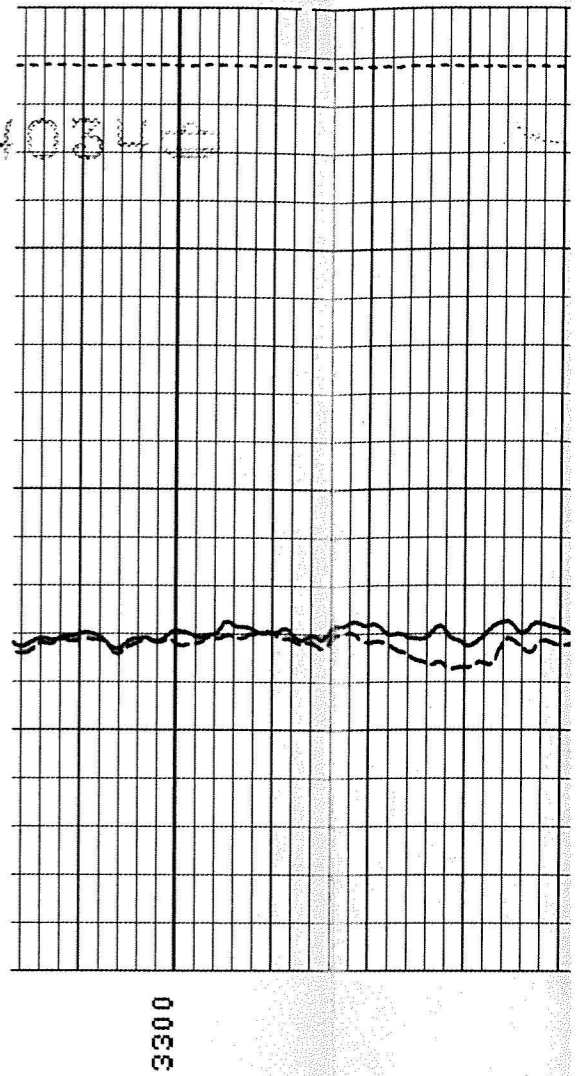
3200



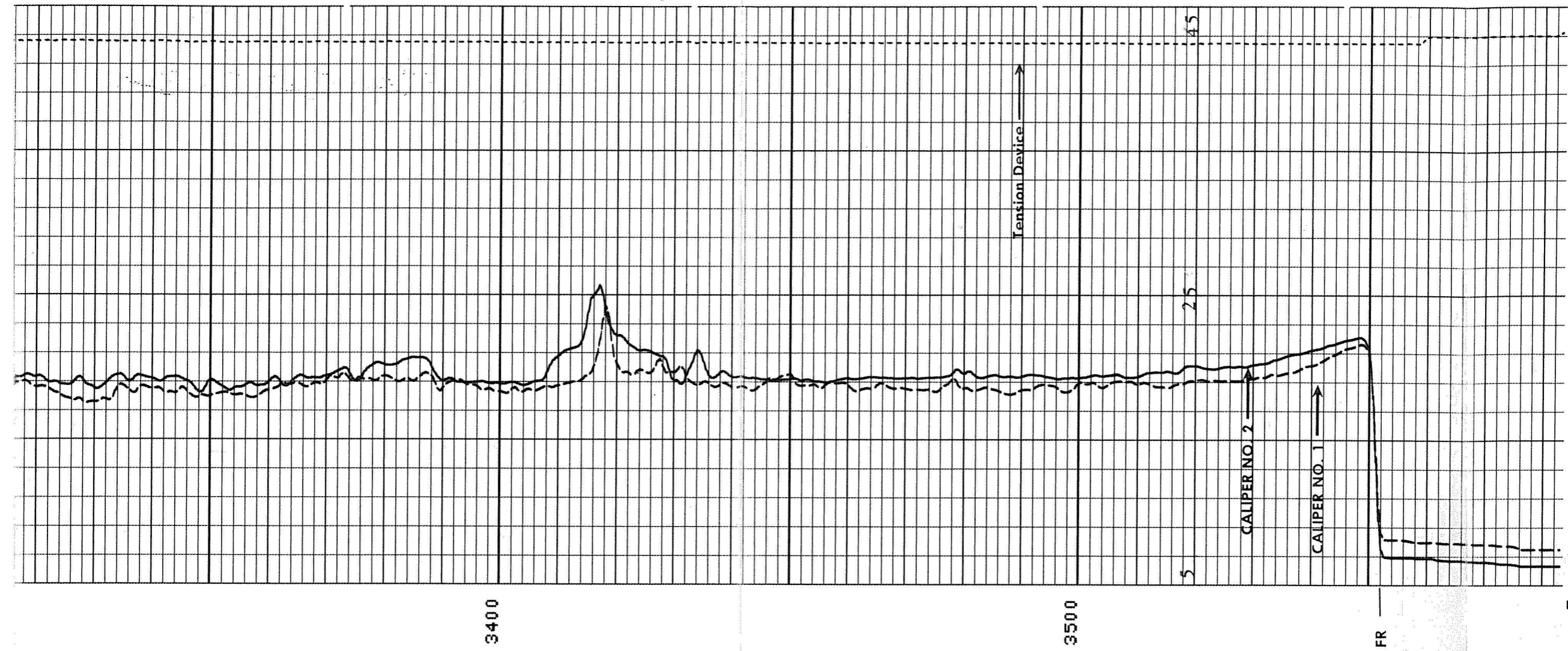
6  
6  
6  
5  
5

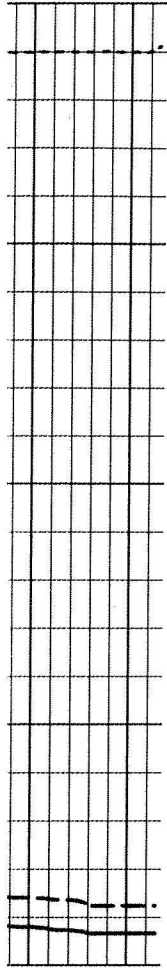
074034

REPEAT SECTION

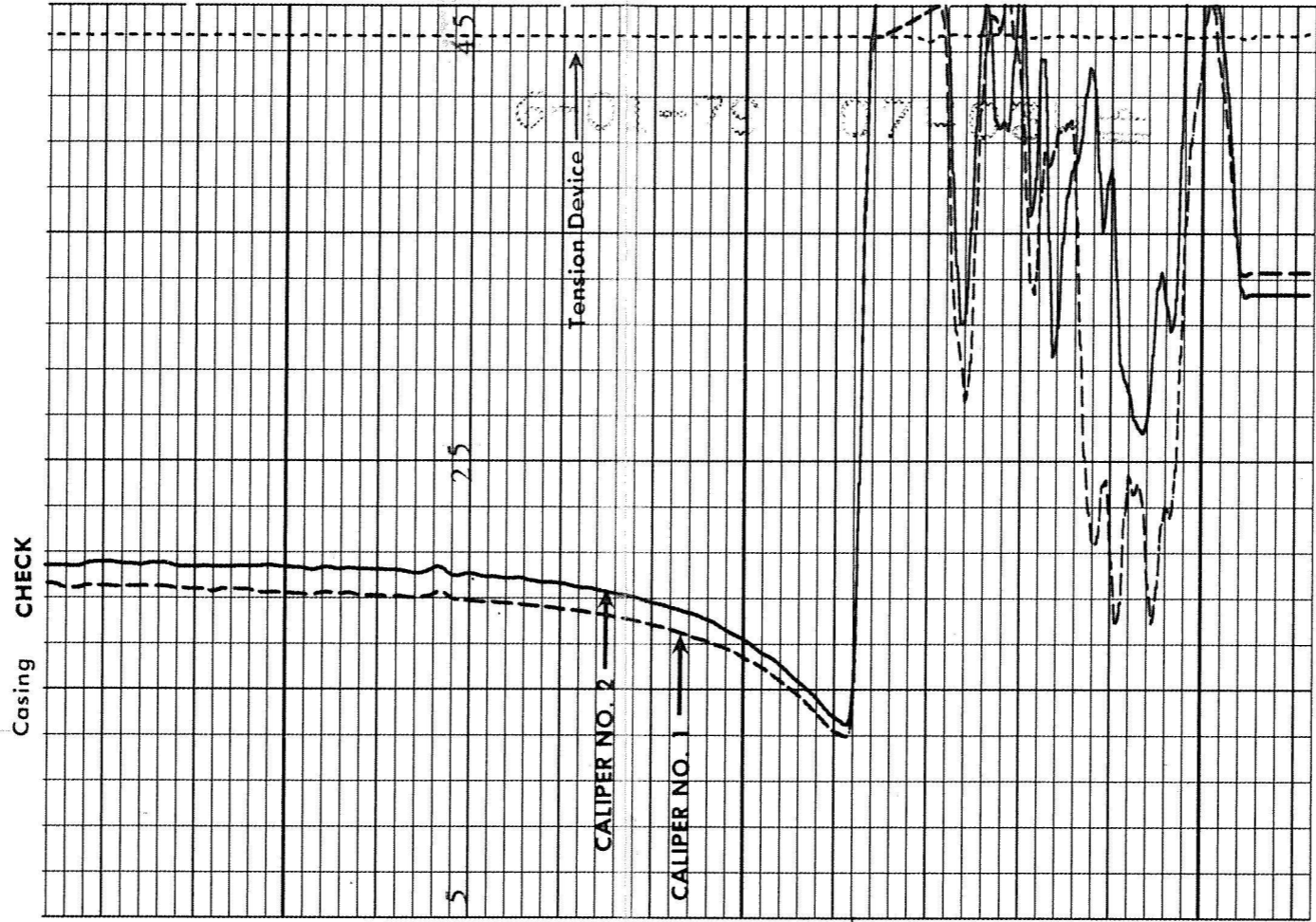




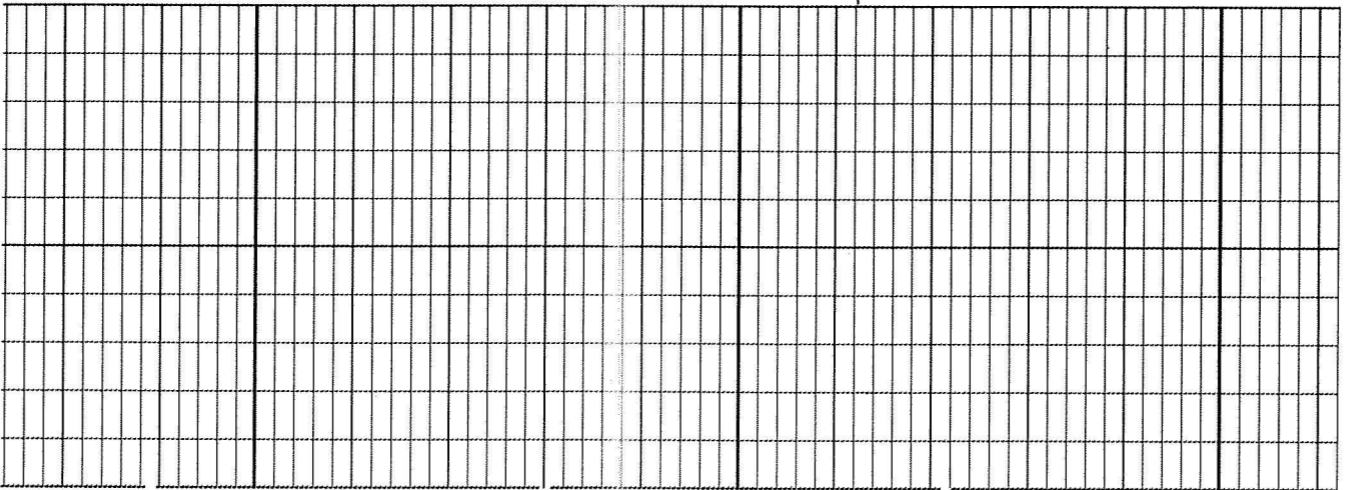




555555 444444



444444 999999 999999



TENS(LB) 0.0 10000.

00000

	TENS(LB)	0.0
10000.		
5.000	CSFL(MM/M)	45.00
5.000	CLL8(MM/M)	45.00

000

